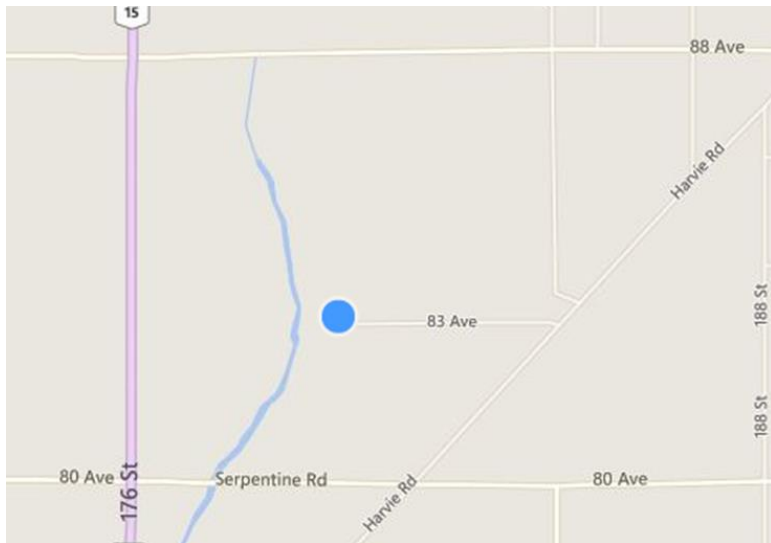


## Farm Location

17990 83 Ave.  
Surrey, BC, V4N 6A8  
(Harvie Rd. & 83<sup>rd</sup>)



MAP:

<https://bit.ly/1SSoDHb>

## Contact

Ken & Shihoko Warren

778-828-2842 (cell: Ken)

778-242-0128 (cell: Shihoko)

[kenshiwarren@hotmail.com](mailto:kenshiwarren@hotmail.com)

# New Eden Ministry 2016



New Eden

Organized by Church of All Nations

# New Eden Ministry 2016

## Join Us for the 4<sup>th</sup> season

We are a Christian community that loves God, people & His creation. We practice our belief of God's love and redemption for all creation through gardening.

God has blessed this ministry with many people joining from around the world and ages from children to seniors.

Every year, we share our organic produce with homeless shelters, hospices, and the needy in our communities.

**Everyone is Welcome !**



New Eden is a ministry organized  
by the Church of All Nations  
[www.allnationscanada.ca](http://www.allnationscanada.ca)

## Schedule 2016

Saturdays 10:00 am -2:30 pm

|          |                      |
|----------|----------------------|
| Mar. 20  | Seeding Event*       |
| May 7    | Kick off             |
| May 21   |                      |
| June 4   |                      |
| June 18  |                      |
| July 9   |                      |
| July 23  |                      |
| Aug. 6   |                      |
| Aug. 20  |                      |
| Sept. 3  |                      |
| Sept. 17 |                      |
| Oct. 2   | Harvest Celebration* |
| Oct. 15  | Wind up              |

\* Sundays @ Vancouver

\* In the case of rain or poor weather, cancellation may occur.

## Things to bring

gloves, hat/cap, sunscreen, boots or work shoes, camping chairs, drinks, lunch, your own re-useable plates, cups and utensils (We strive to be environmentally friendly)

\* Lunch is available by donation:

e.g. \$1.50 hot dogs or hamburgers etc., depending on the schedule. All money will go to support the cost of garden supplies and rental fees, etc.